

# PATHFINDER HIKE PROGRAM

## BOGGS MOUNTAIN

### Boggs Mountain Demonstration State Forest

Cobb, CA

[GPS Downloads](#)

[Pathfinder Hikes on Google Maps](#)

[Order Patches Online](#)

Trail Length: 5.2 mi

Average Elevation: 3,274 ft

Elevation Change: 555 ft



### Overview

This middle-elevation ponderosa pine forest was the territory of the Lake Miwok people. Henry Boggs acquired the land between 1878 and 1884. The forest was logged extensively. The State of California purchased the land and established a State Forest in 1949.

Boggs Mountain Demonstration State Forest serves as an example of a recently cutover forest from which all merchantable timber has been cut, except for a few seed trees and scattered patches of mature trees considered inaccessible at the time of acquisition. It is now a forest actively managed for wise use of all its resources, including the continuous growing and harvesting of trees for wood products, public recreation, wildlife habitat and watershed.

Boggs Mountain is open year-round for public recreational use. A system of trails for non-motorized use exists covering a variety of terrain including meadows, ridge-tops, and dense forests.

### How To Get There

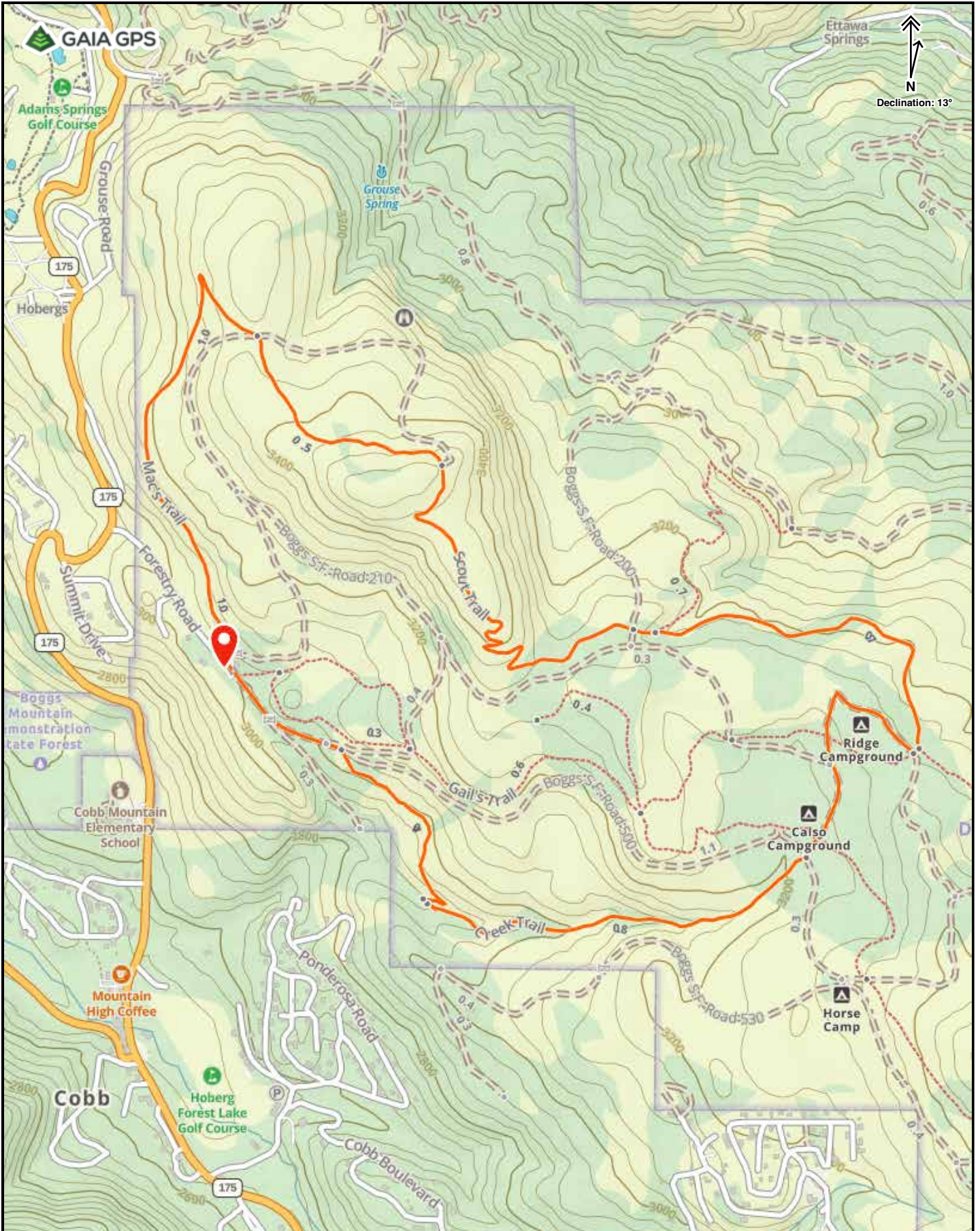
From Highway 29 (Kelseyville): From Highway 29 at Kelseyville, head south to the junction with Highway 175. Take Highway 175 south approximately 10 miles through Loch Lomond and Hobergs to the Black and White Fire Station sign. Turn in to Boggs Mountain Demonstration State Forest.

From Highway 29 (Middletown): From Highway 29 at Middletown, head north on Highway 175 until you reach the Black and White Fire Station sign. Turn in to Boggs Mountain Demonstration State Forest.

[Google Maps Driving Directions](#)

### The Hike

The hike starts at the heliport and office parking lot. Take the Houghton Creek Trail East to the junction with High Chair Trail. Turn west on High Chair Trail and follow to the junction with Karen's Trail. Turn Southwest on Karen's Trail and continue to Vista Point. From Vista Point, head west on Hobergs Loop, continuing south with Mac's Trail and then returning to the parking lot.



  
 Declination: 13°