

PATHFINDER HIKE PROGRAM

BLACK DIAMOND

Black Diamond Mines

Antioch, CA 94509

[GPS Downloads](#)

[Pathfinder Hikes on Google Maps](#)

[Order Patches Online](#)

Trail Length: 8.7 mi

Average Elevation: 795 ft

Elevation Change: 876 ft

Overview

Starting in the 1860's and continuing into the early 20th century, the Black Diamond Mines area operated a number of coal mines. More than 1.8 million tons of coal were removed from the ground during this time period. As coal use dropped off, sand was also mined at Black Diamond.

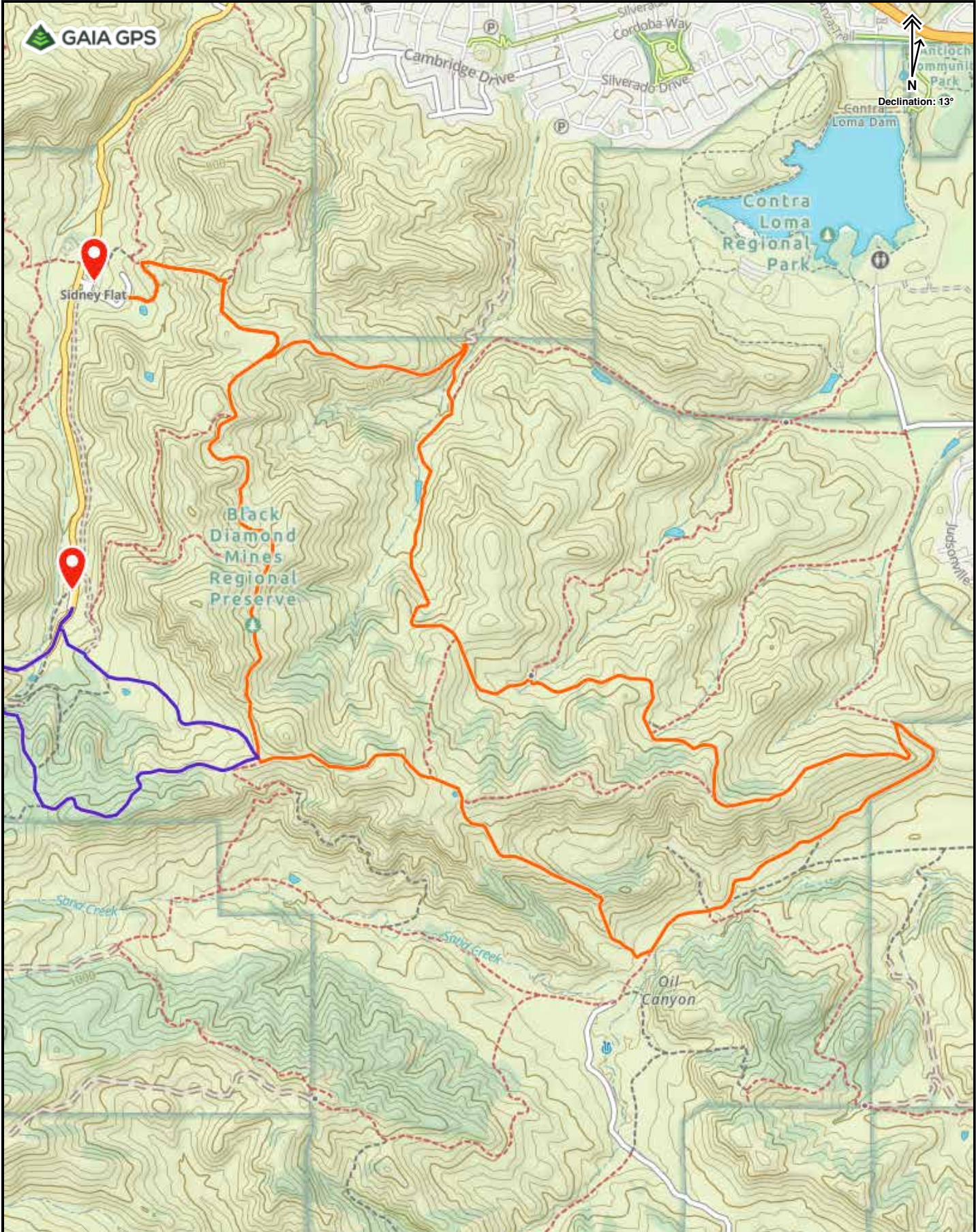
The area is now a regional park with around 65 miles of hiking trails through beautiful countryside. Mine tours are available (see website or call the park office for details), or units may go on self guided tours of some of the mining facilities that remain. Also of particular interest is the Rose Hill Cemetery, where many of the former miners and their families are buried.

How To Get There

From Highway 4: Take the Somersville Road exit. Continue south on Somersville to the park entrance.

[Google Maps Driving Directions](#)





GAIA GPS

Antioch Community Park
N
Declination: 13°

Sidney Flat

Black Diamond Mines Regional Preserve

Contra Loma Regional Park

Contra Loma Dam

Oil Canyon

Santa Creek

Santa Creek

3000 ft
Web Mercator | EPSG: 3857